



# Changing Services for the Elderly The Perspective of a Clinical Nurse Specialist

Ingibjörg Hjaltadóttir, RN, PhD





# System Changes

- In 2013 preparations for the transfer of services for the elderly from central government in Iceland to municipalities were starting
- When such major changes are being implemented the experience and knowledge of Clinical Nurse Specialists is of value

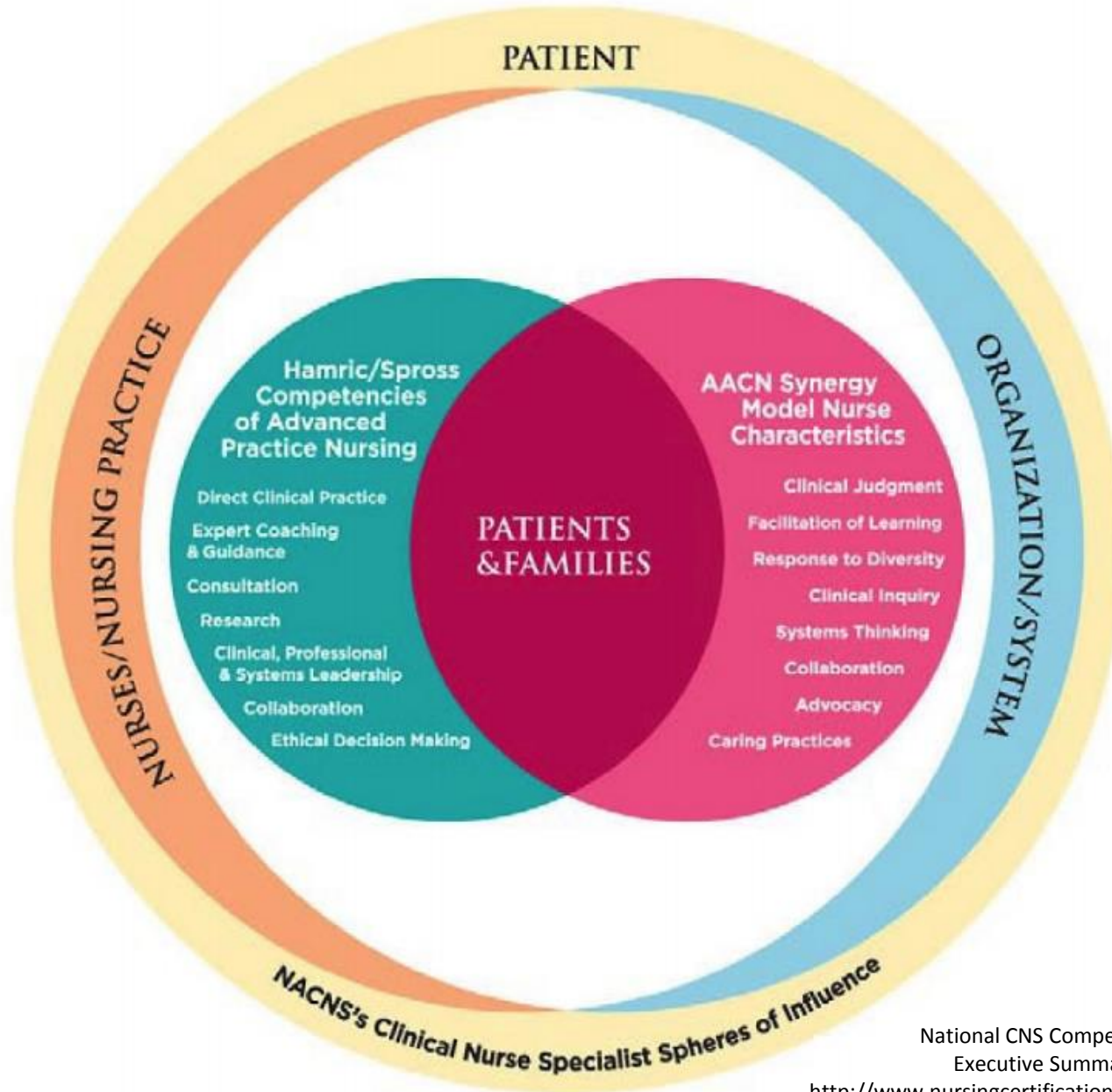


# The Clinical Nurse Specialist

- National Association of Clinical Nurse Specialist's has clarified the competencies and behavior of CNS's

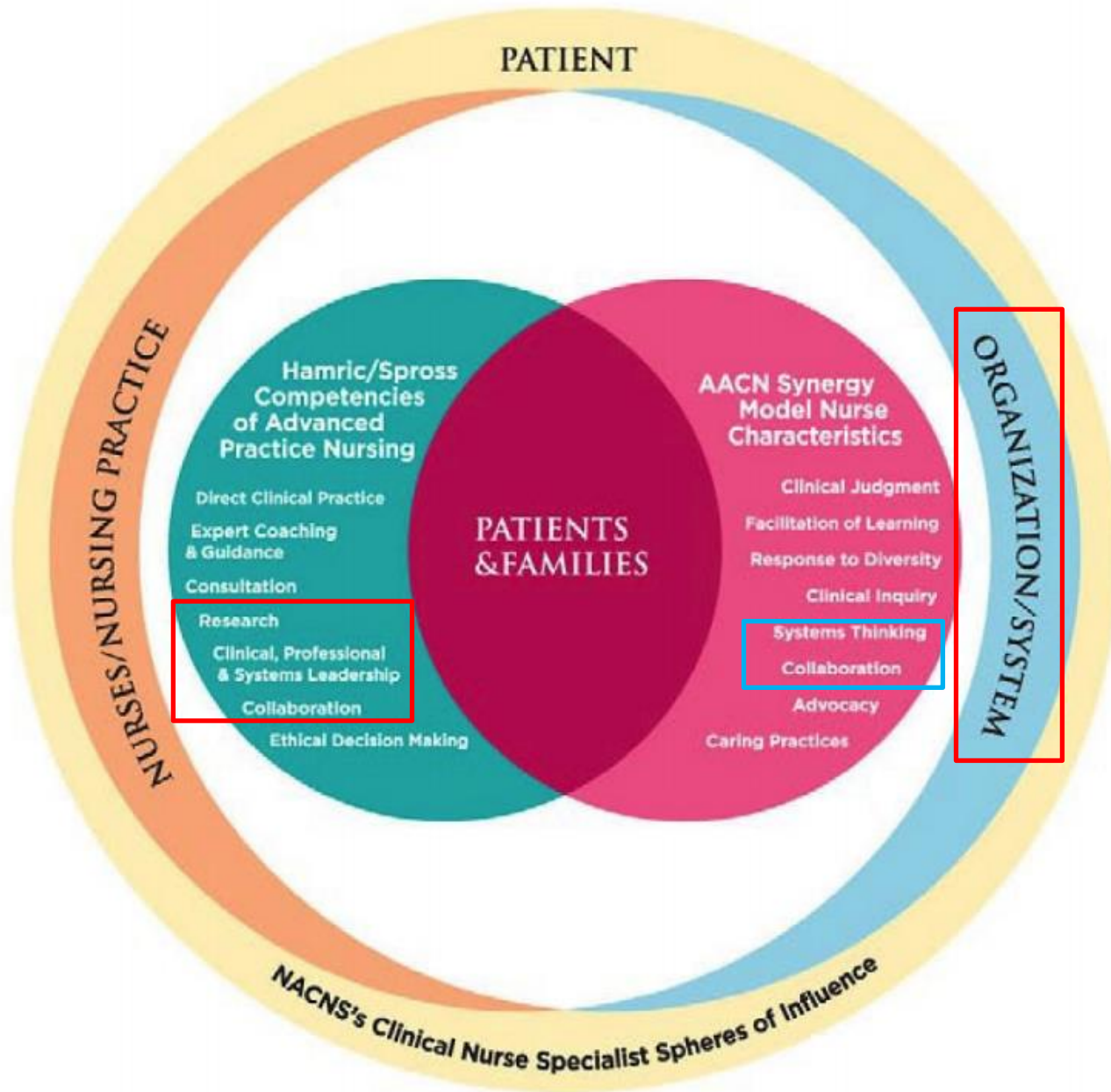
Reference: National CNS Competency Task Force: Executive Summary 2006-2008 <http://www.nursingcertification.org/pdf/Exec%20Summary%20-%20Core%20CNS%20Competencies.pdf>

# National Association of CNS Model of Clinical Nurse Specialist Competency and Behaviors

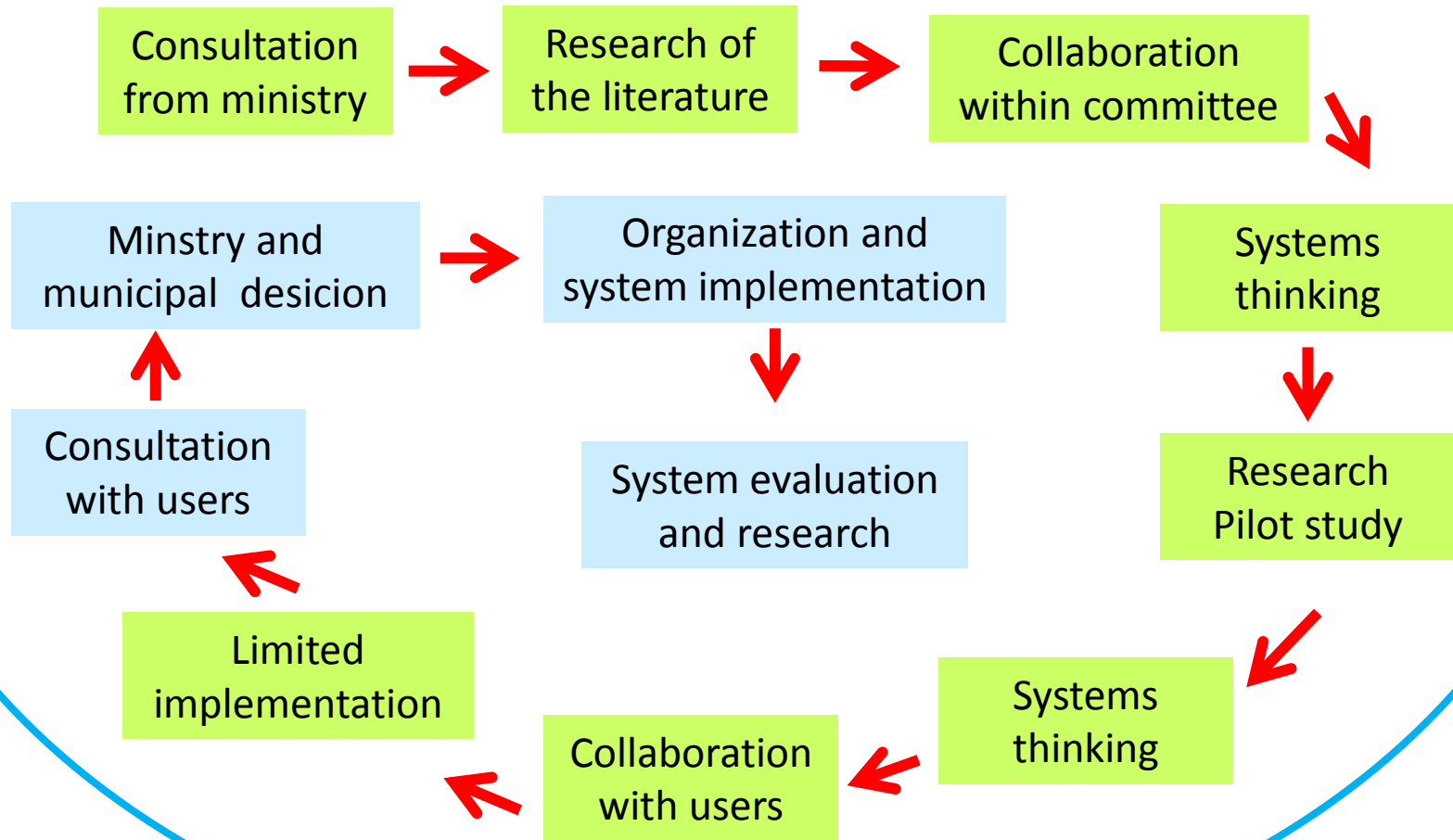


National CNS Competency Task Force:  
Executive Summary 2006-2008

<http://www.nursingcertification.org/pdf/Exec%20Summary%20-%20Core%20CNS%20Competencies.pdf>



# Clinical Nurse Specialist Collaboration and Leadership






# The function of the CNS

## In this project

- Being a change agent in system and organizational improvements
- Facilitating collaboration
- Use of evidence based knowledge
- Conducting research



## **Assessing Individual Needs for Resources using the interRAI Home Care Instrument**

- Systematic assessment
- Information for decision making in clinical settings as well as on municipality and government level
- Evaluation of change and quality

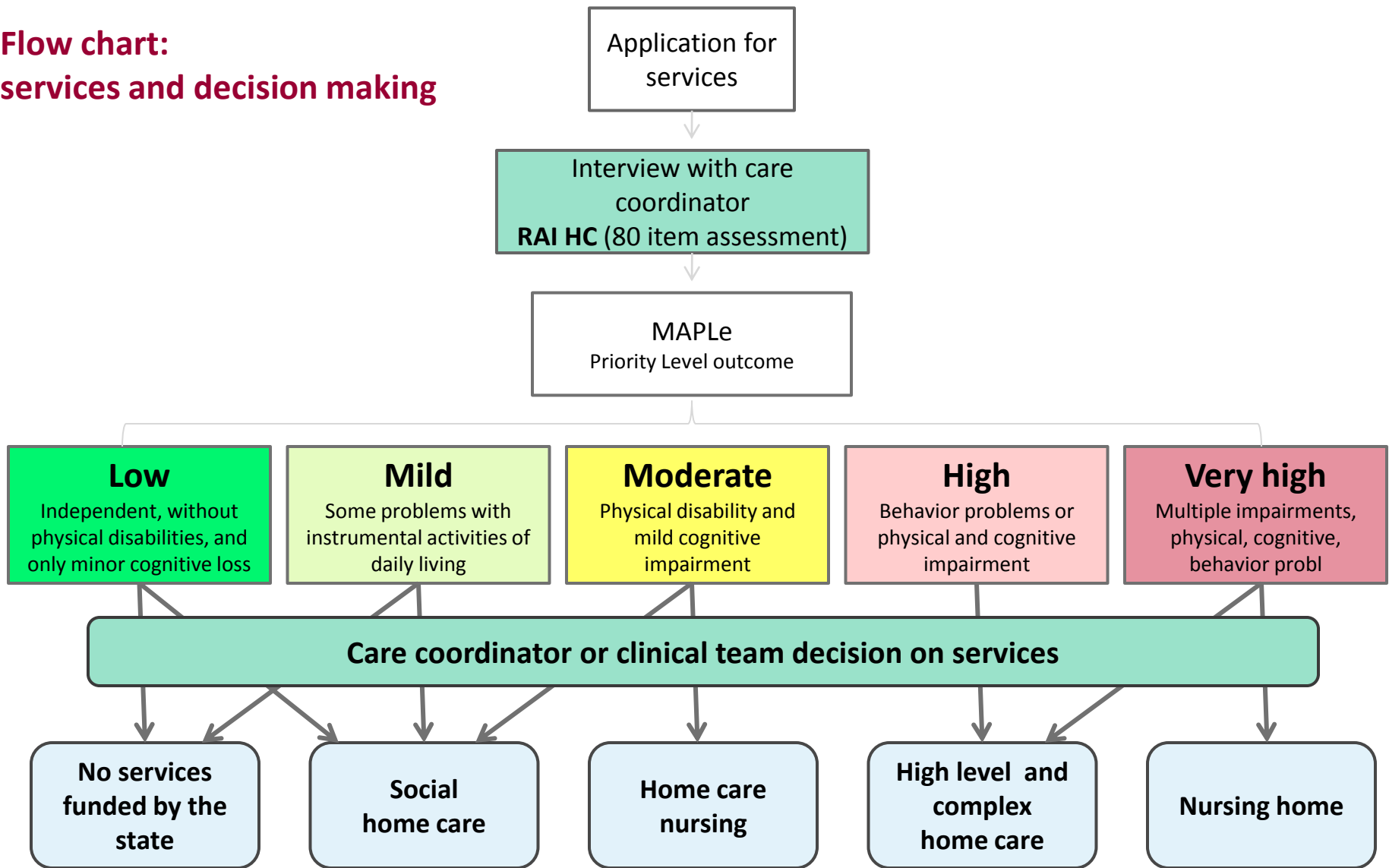




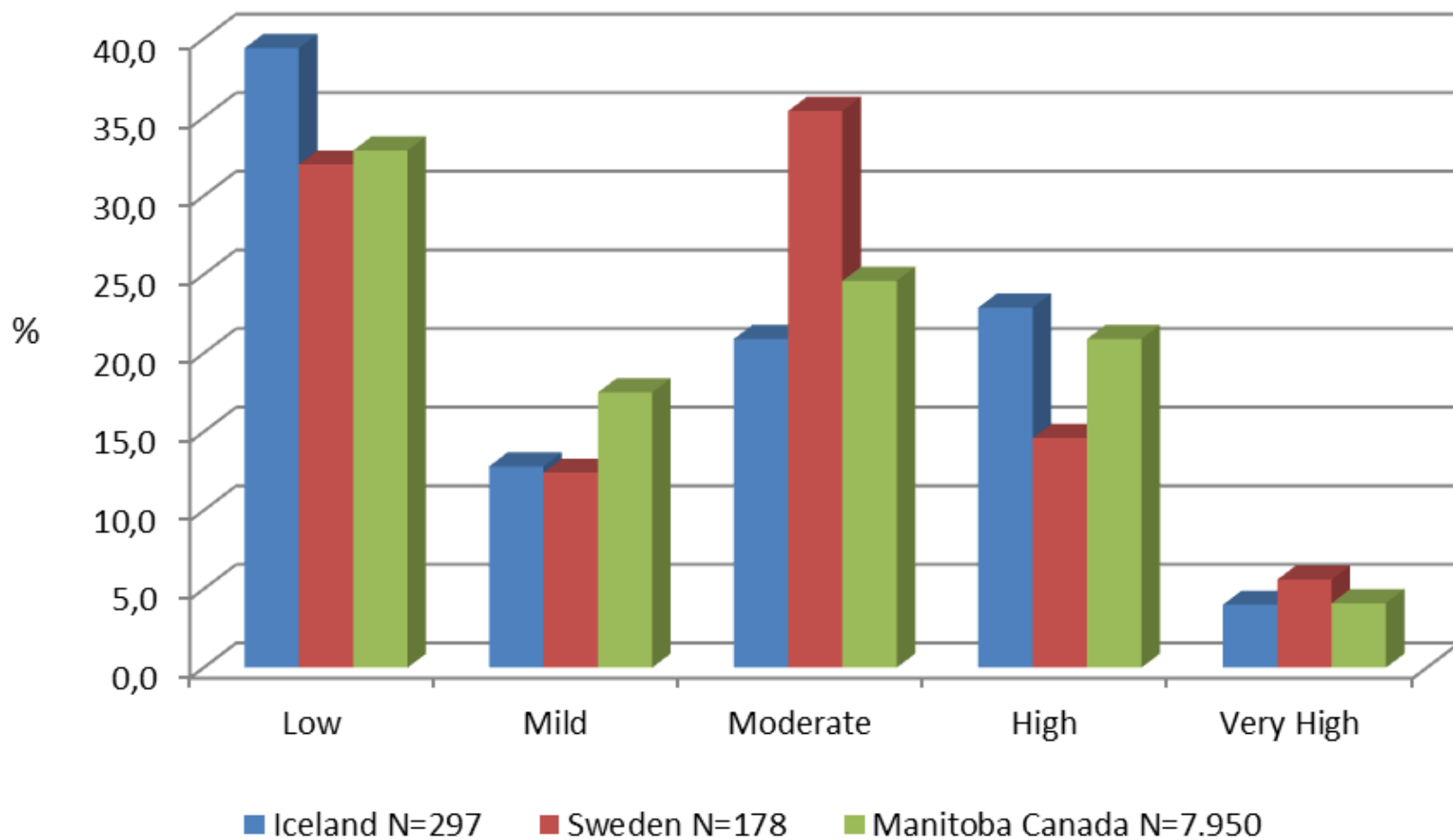
# interRAI Home Care instrument

- 36 data items from the interRAI Home Care used in determining the MAPLe algorithm
- Method to Assess Priority Levels - MAPLe
- Used to support decision-making on allocating home care and nursing home placement

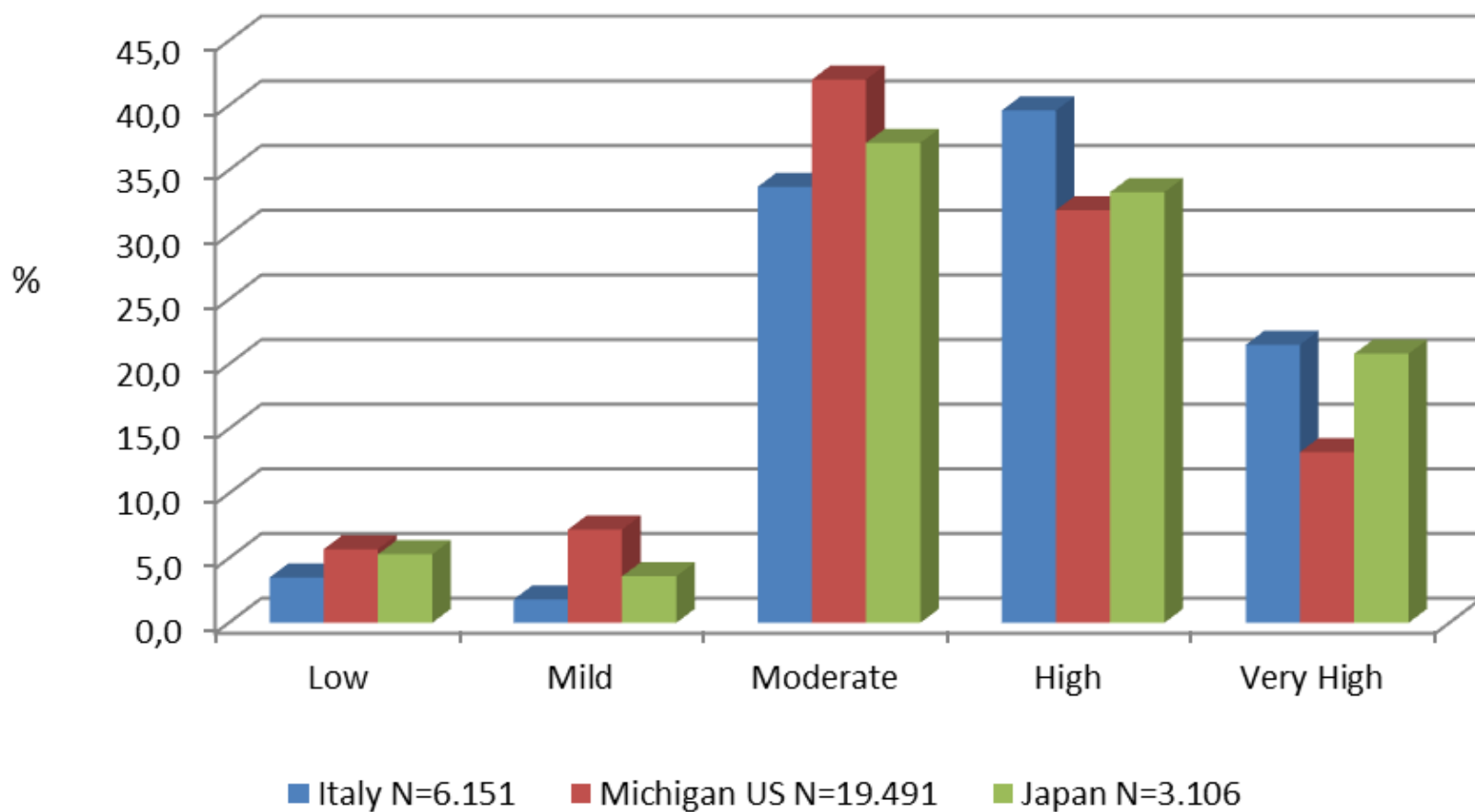
**Flow chart:  
services and decision making**



Distribution of MAPLe priority levels in 3 countries for home care clients (Hirdes o.fl. 2008)

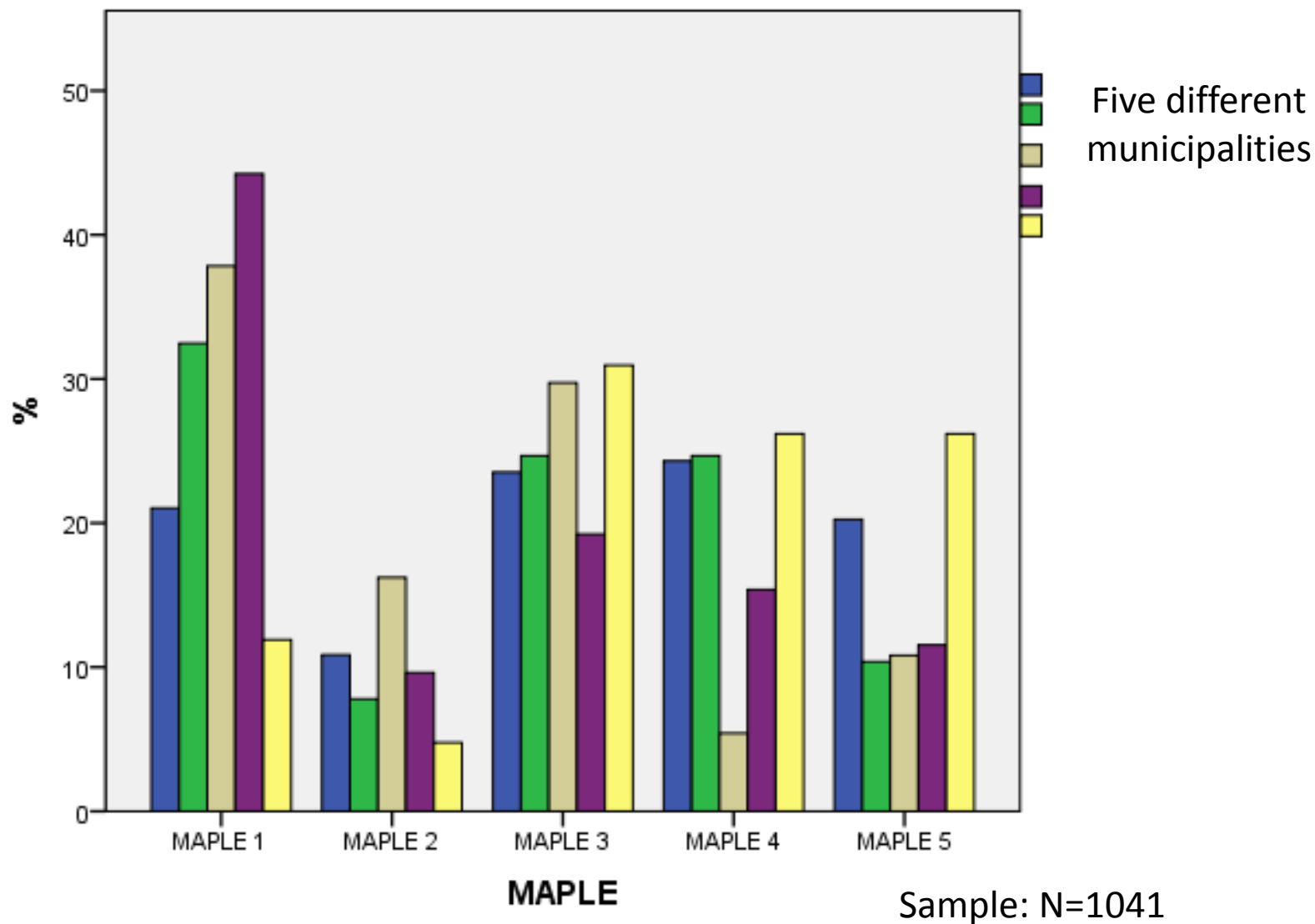


Distribution of MAPLe priority levels in 3 countries for home care clients (Hirdes o.fl. 2008)

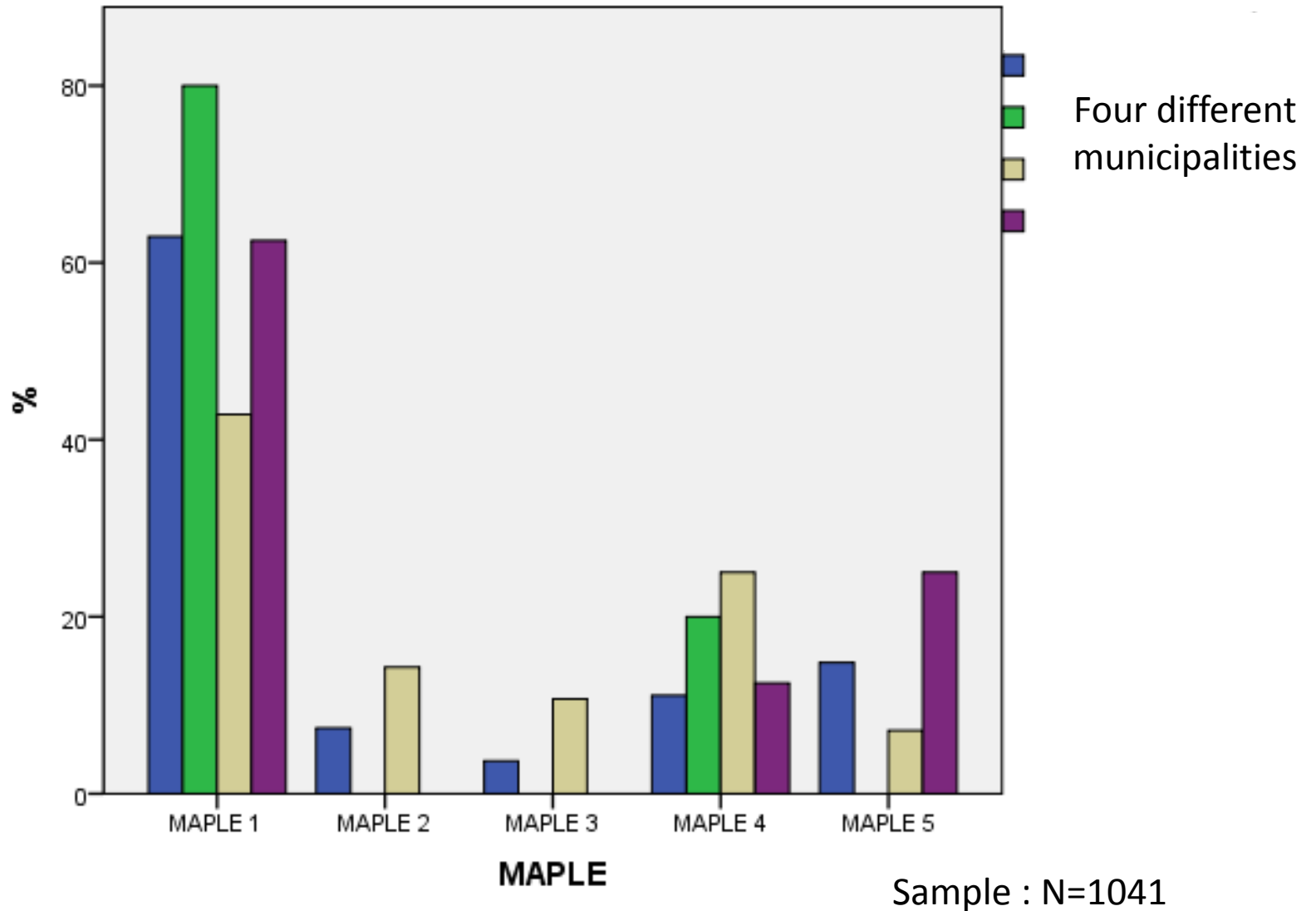




## Percentage of clients receiving home nursing in each MAPLe category depending on geographical location in Iceland



Percentage of clients receiving home care from social services in each MAPLE category depending on geographical location in Iceland





# For consideration and reflection!

- Major system changes that need elaborate preparations
- Possibility of system improvement with improved resource use
- In a population based change like this the knowledge and expertise of Clinical Nurse Specialists is needed



Ingibjörg Hjaltadóttir