





Evidence implementation - a key for success

Anne Korhonen, PHD, RN, Reseacher

Nursing Research Foundation
The Finnish Centre for Evidence-Based Health Care:
A Joanna Briggs Institute Centre of Excellence
WHO Collaborating Centre for Nursing

3.10.2017

Content

- Implementation
- Putting implementation into context
- Results of evidence implementation

- As an example of evidence implementation one of our project "Operational model of improving hand hygiene practices" (<http://www.hotus.fi/hotus-en/model-consistent-practices>) is discussed

Hotus / A Korhonen

Evidence implementation

- The aim of implementation is ensuring that the effective and meaningful methods and interventions are use in patient care, health promotion and improving services
- The goal is to attain sustainable impacts on patient care
- Implementation is
 - a multicomponent intervention,
 - change management,
 - social process
- Implementing as a sub-process in EBP

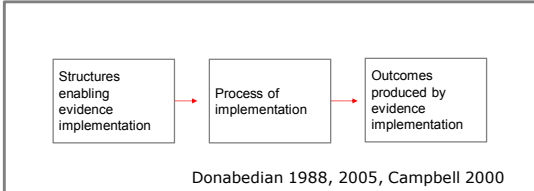
(Aasekjær ym. 2016, May ym. 2014, 2016)

Hotus / A Korhonen

Putting evidence implementation into context

Frame of reference:

- There must be structures for evidence implementation
- Which make the process possible
- Which produce the outcomes



```

graph LR
    A[Structures enabling evidence implementation] --> B[Process of implementation]
    B --> C[Outcomes produced by evidence implementation]
  
```

Donabedian 1988, 2005, Campbell 2000

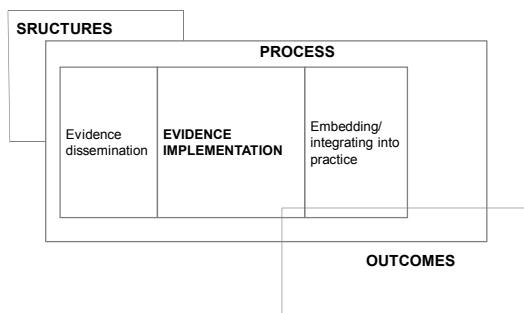
Evidence implementation – barriers and misunderstandings

- Common barriers are well known
 - Attitudes
 - Resistance to change
 - Not knowing
 - Culturally accepted behavior, habits, workarounds
- Implementation is a simple process
 - "Fast track" for success?
 - Knowing does not mean doing

Chaudoir et al. 2013, Flottrop et al. 2013, McEvoy et al. 2014
Stetter et al. 2014, Melnyk et al. 2015

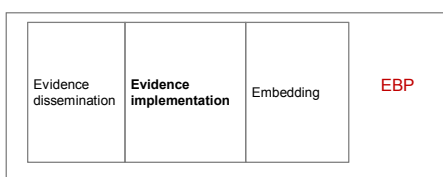
Hotus / A Korhonen

Evidence implementation is a sub-process of EBP



Hotus / A Korhonen

Evidence implementation is a sub-process of EBP



How much /strongly the evidence should be embedded before the practices are evidence-based?

- Some nurse/physician? Everybody?

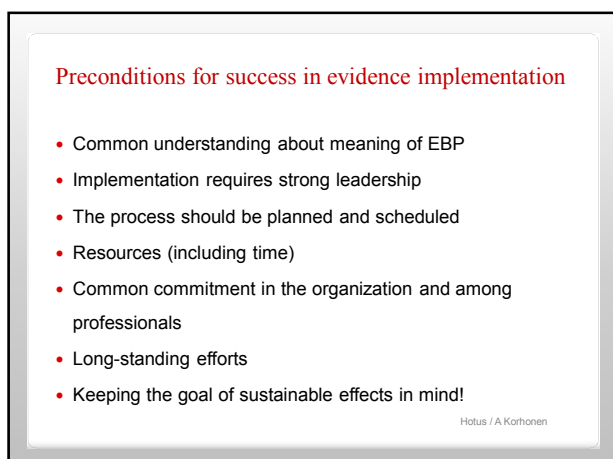
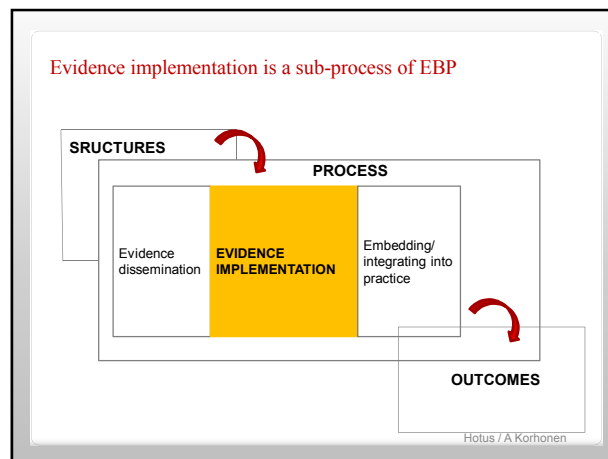
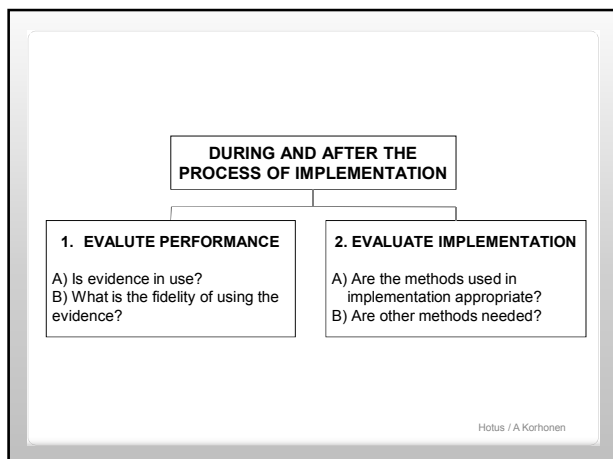
Hotus / A Korhonen

Implementation – fast track?

- From history of current practice to current needs for development
- From dev. of a new intervention or consistent model of operation to adress on its safety, effectiveness, cost-effectiveness
- From decision to implement to adherence among staff
- To individual adherence

Glaziou & Haynes 2005, Morris et al. 2011, Hanney et al. 2015

Hotus / A Korhonen



NÄYTTÖÖN PERUSTUVA TOIMINTA
Vaikuttavuutta terveydenhuoltoon
www.hotus.fi

Implementation IS a key for success

anne.korhonen@hotus.fi

27.10.2016

Important pages to be noticed

Home pages: <http://www.hotus.fi/>

WHO Collaborating Centre for Nursing, link to our report:
http://www.euro.who.int/__data/assets/pdf_file/0017/348020/WH06_EBP_report_complete.pdf?ua=1

Our cooperator: <https://www.skhole.fi/>

Hotus / A Korhonen

References

- Campbell SM, Roland MO, Buetow SA. 2000. Defining quality of care. *Social Science & Medicine* 51,1611–1625.
- Chaudoir S.R., Dugan A.G. & Barr C.H. (2013) Measuring factors affecting implementation of health innovations: a systematic review of structural, organizational, provider, patient, and innovation level measures. *Implementation Science : IS* 8, 22-5908-8-22.
- Donabedian A. (2005) Evaluating the quality of medical care. 1966. *The Milbank Quarterly* 83(4), 691-729.
- Donabedian A. (1988) The quality of care. How can it be assessed? *Jama* 260(12), 1743-1748.
- Flottorp S.A., Oxman A.D., Krause J., Musila N.R., Wensing M., Godycki-Cwirko M., Baker R. & Eccles M.P. (2013) A checklist for identifying determinants of practice: a systematic review and synthesis of frameworks and taxonomies of factors that prevent or enable improvements in healthcare professional practice. *Implementation Science: IS* 8, 35-35.
- Glasziou P. & Haynes B. (2005) The paths from research to improved health outcomes. *Evidence-Based Nursing* 8(2), 36-38.
- Hanney S.R., Castle-Clarke S., Grant J., Guthrie S., Henshall C., Mestre-Ferrandiz J., Pistollato M., Pollitt A., Sussex J. & Wooding S. (2015) How long does biomedical research take? Studying the time taken between biomedical and health research and its translation into products, policy, and practice. *Health Research Policy and Systems* 13, 1-4505-13-1.
- Jansson, M., Syrjäälä, H. ym. 2016. Simulation education as a single intervention does not improve hand hygiene practices – a randomized controlled follow-up study. *Am Jour Inf Control* in press
- Shabot, M. ym. Sustaining Improvement in Hand Hygiene and Health Care-Associated Infection. *Joint Comm. Jou Qual and Patient Safety* 2016; 42(1):6-21
- Talbot, T. ym. Sustained Improvement in hand Hygiene Adherence: Utilizing Shared Accountability and Financial Incentives. *Inf Control & Hospital Epid.* 2013; 34:1129-36.

- May C. (2013) Towards a general theory of implementation. *Implementation Science : IS* 8, 18-5908-8-18.
- May C., Sibley A. & Hunt K. (2014) The nursing work of hospital-based clinical practice guideline implementation: an explanatory systematic review using Normalisation Process Theory. *International Journal of Nursing Studies* 51(2), 289-299.
- May C.R., Johnson M. & Finch T. (2016) Implementation, context and complexity. *Implementation Science* 11(1).
- May C.R., Mair F., Finch T., MacFarlane A., Dowrick C., Treweek S., Rapley T., Ballini L., Ong B.N., Rogers A., Murray E., Elwyn G., Légaré F., Gunn J. & Montori V.M. (2009) Development of a theory of implementation and integration: Normalization Process Theory. *Implementation Science* 4(1).
- McEvoy R., Bellini L., Maltoni S., O'Donnell C., Mair F. & MacFarlane A. (2014) A qualitative systematic review of studies using the normalization process theory to research implementation processes. *Implementation Science* 9(2).
- Melnyk B.M., Buck J. & Gallagher-Ford L. (2015) Transforming Quality Improvement Into Evidence-Based Quality Improvement: A Key Solution to Improve Healthcare Outcomes. *Worldviews on Evidence-Based Nursing* 12(5), 251-252.
- Morris Z.S., Wooding S. & Grant J. (2011) The answer is 17 years, what is the question: understanding time lags in translational research. *Journal of the Royal Society of Medicine* 104(12), 510-520.
- Stetler C.B., Ritchie J.A., Rycroft-Malone J. & Charns M.P. (2014) Leadership for evidence-based practice: strategic and functional behaviors for institutionalizing EBP. *Worldviews on Evidence-Based Nursing* 11(4), 219-226.